

The HM20 is an Instru-Mount that is designed exclusively for single, remote mounted pressure transmitter, switch or gauge installations. In the past, these instruments were often mounted on conventional valve and fitting assemblies with gate, globe or ball valves, and offered minimal instrument support with high risk of fugitive emissions.

The HM20 Series manifold combines shutoff and bleed functions, along with calibration access into one compact, well supported unit that can be mounted on a 2" pipestand. Emissions are reduced because all valves are integral to the barstock body, thereby eliminating externally threaded bleed valves as supplied on other manifold designs.

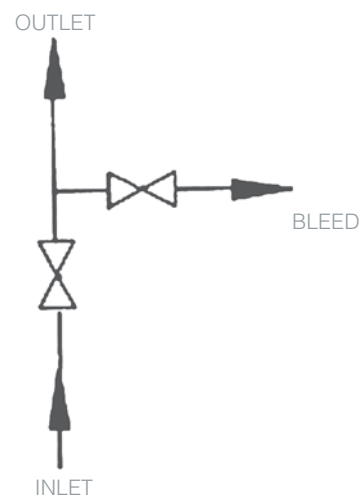


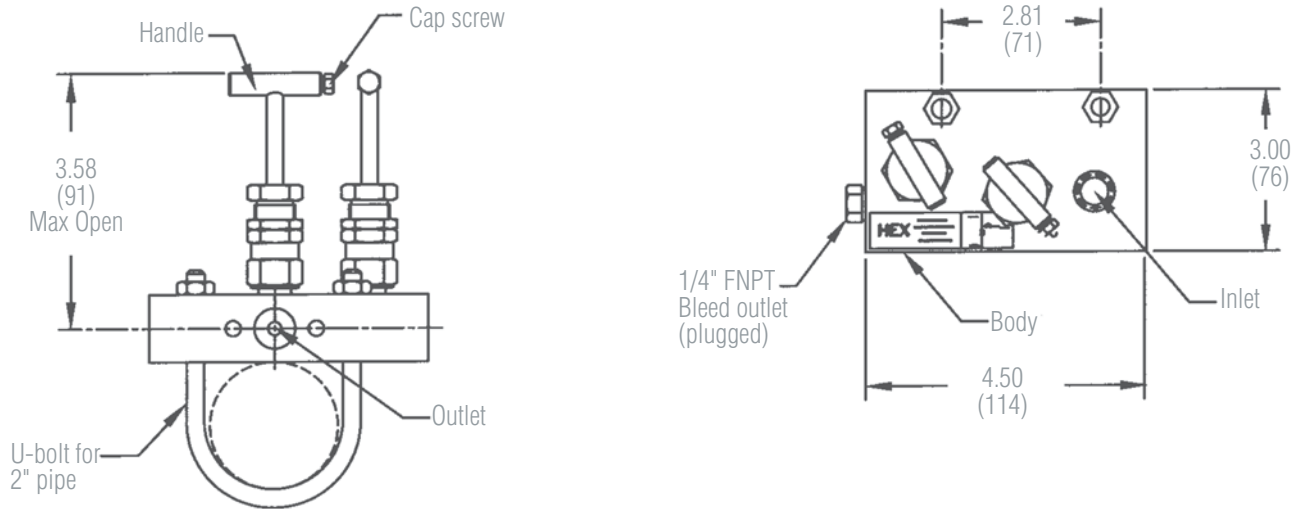
U-bolt mounting is integral to the design of the HM20, providing support and allowing you to mount the manifold instead of mounting the instrument

Features and Benefits

- **Reduce costs and installation time:** Use the Instru-Mount manifold in place of the traditional arrangement of nipples, pipes, elbows, tees and gate valves for a lower cost, easy-to-install valve assembly
- **Your choice of mounting options:** Choose from single or double instrument mounts to match your application needs and specific instruments
- **Easy to insulate:** Prefabricated instrument enclosures fit neatly over the compact, one piece valve assemblies. Enclosures are currently marketed that accommodate these valves
- **Non-rotating tip (NRT) stem:** Provides tight, repeatable shutoff without the galling or cross-scoring that occurs on ball type stems. Because the NRT conical stem tip stops rotating when it contacts the seat, further torque turns the stem, but not the tip, protecting the stem tip from damage.
- **Integral tube nut or inlet flanges available:** Reduces risks and emissions by eliminating threaded process connections
- **Fully packed, backseated bonnets:** Prevents accidental stem removal and blowout. Unique design minimizes emissions while offering easy access to the packing. Four rings of Teflon-Chevron packing are standard.

Flow Schematic



Dimensions


Weight: 5.0 lbs (2,3 kgs)

How to Order									
Model Number	Seat/ Body Configuration	Body Material	Inlet Size	Inlet Type	Outlet Size/Type	Stem/Tip	Seat Material	Packing	Options
HM20	1 = Hard	S = CS	3 = 1/2"	3 = FNPT	99 = Flanged	4 = 316/316SS NRT	1 = Integral (hard)	2 = TFE - Chevron	N = Steam Trace Block
		U = SS	A = 1/2" Single Ferrule Integral Tube Nut	A = Integral Tube Nut				3 = Graphite/ Grafoil/Graphite	
			B = 1/2" Double Ferrule Integral Tube Nut	B = Tube Fitting/ Flange					
			C = Swagelok™ Tube Fitting/Flange	9 = Flanged					

Sample Ordering Schematic

HM20	1	U	3	3	99	4	1	2	N
------	---	---	---	---	----	---	---	---	---

Note: 1/2" FNPT futbols for inlet or outlet must be ordered separately. To order CS 1/2" FNPT outlet futbol flange (1), order part # 10007-9010; to order SS 1/2" FNPT outlet futbol flange (1), order part # 10007-9011